

# TOWN OF WEST SENECA

## APPLICATION FOR REZONING - SPECIAL PERMIT

### TO BE COMPLETED BY APPLICANT

DATE June 30, 2016

FILE # 2016-05

PROJECT NAME NEW BILLBOARD SIGN

PROJECT LOCATION (Include address and distance to nearest intersection)

1648 - 1650 Union Rd.

Approx. 390' to Gemcor Dr.

APPLICANT Vann Advertising, Inc.

PH/FAX 716-425-6443

ADDRESS 5651 River Rd. Niagara Falls, ON L2E 7M7

PROPERTY OWNER P.J. Materials Inc.

PH/FAX \_\_\_\_\_

ADDRESS 1650 Union Rd. West Seneca, N.Y. 14224

ENGINEER/ ARCHITECT \_\_\_\_\_

PH/ FAX \_\_\_\_\_

ADDRESS \_\_\_\_\_

1048 - 134.12-1-11.2

ZBL # 1050 - 134.12-1-11.1

PROJECT DESCRIPTION (Include all uses and any required construction)

To construct a two sided 10'H x 36'W billboard sign 35' high

SIZE OF LOT (acres) 1.444531

ACREAGE TO BE REZONED \_\_\_\_\_

ADJACENT ROAD NAMES AND AMOUNT OF FRONTAGE ON EACH

The proposed sign is located between Gemcor Dr. + Route 400

EXISTING ZONING M2

PROPOSED ZONING M-2(S)

EXISTING USE(S) ON PROPERTY \_\_\_\_\_

PROPOSED USE(S) ON PROPERTY \_\_\_\_\_

EXISTING USE(S) AND ZONING ON ALL PROPERTY WITHIN 500 FEET

Concrete Company

PUBLIC SEWER YES  NO \_\_\_\_\_

PUBLIC WATER YES  NO \_\_\_\_\_

VARIANCES AND OTHER APPROVALS OR PERMITS REQUIRED

NA

APPLICATIONS WILL NOT BE ACCEPTED WITHOUT COMPLETION OF ALL REQUIREMENTS LISTED HEREIN

### TO BE COMPLETED BY THE TOWN OF WEST SENECA

DATE RECEIVED 06/30/2016 BY J. P. Johnson

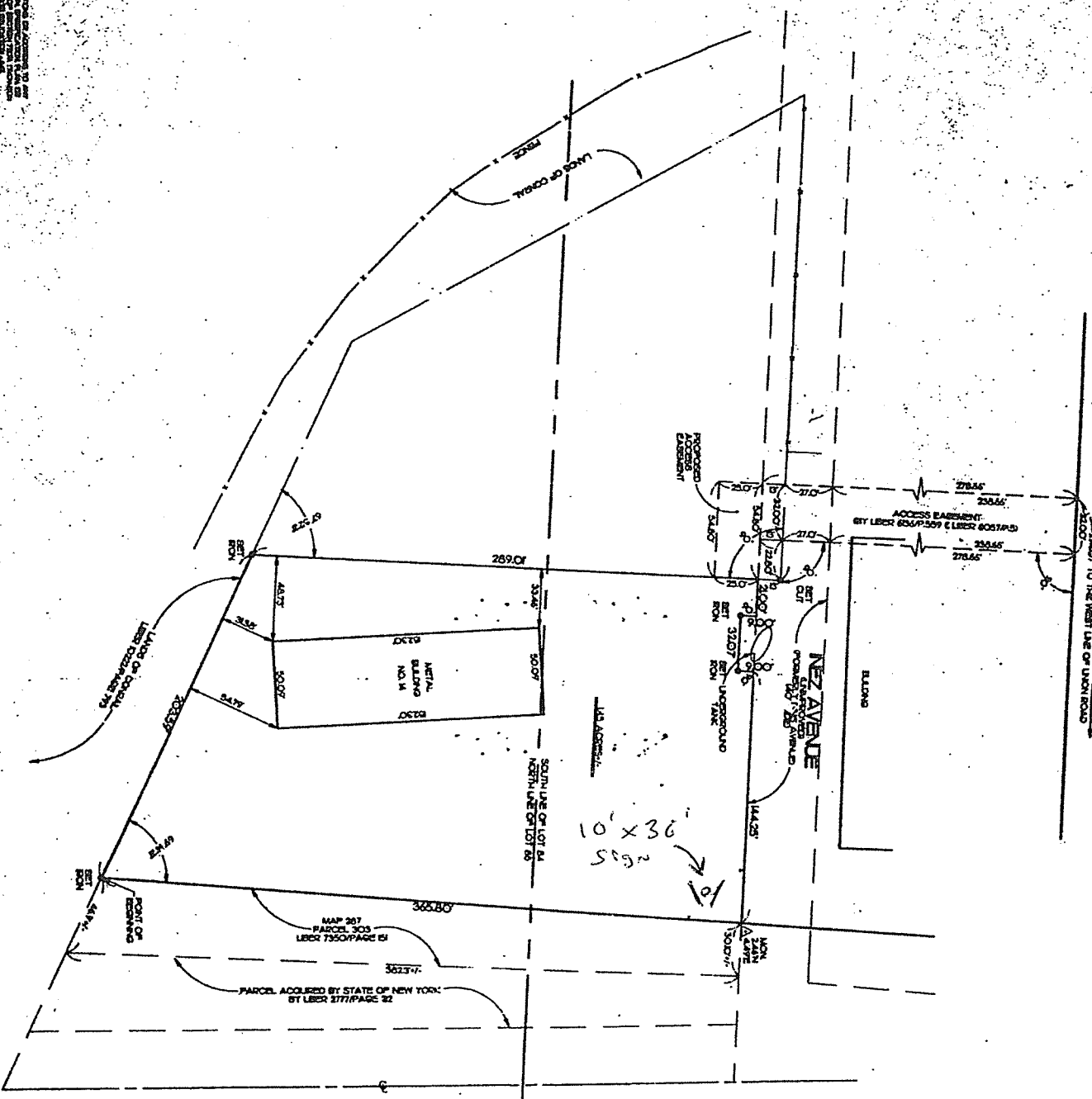
PLANNING BOARD MEETING DATE 07/14/2016

TOWN BOARD MEETING DATE \_\_\_\_\_

TOWN BOARD RESOLUTION DATE \_\_\_\_\_

PLANNED DEVELOPMENT

NORTH SENECA (W. STREET)  
 POTENTIAL WATER ROAD



10' x 36' sign

UNION ROAD  
 (WIDTH VARIES)

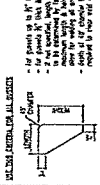


1-1000' SCALE TO:  
 • 1/4" = 100' HORIZONTAL  
 • 1/8" = 100' VERTICAL  
 • 1/16" = 100' CURVATURE  
 • 1/32" = 100' AREA  
 • 1/64" = 100' VOLUME  
 • 1/128" = 100' MASS  
 • 1/256" = 100' WEIGHT  
 • 1/512" = 100' ENERGY  
 • 1/1024" = 100' POWER  
 • 1/2048" = 100' FORCE  
 • 1/4096" = 100' PRESSURE  
 • 1/8192" = 100' STRESS  
 • 1/16384" = 100' STRAIN  
 • 1/32768" = 100' DEFORMATION  
 • 1/65536" = 100' DISTORTION  
 • 1/131072" = 100' DEFLECTION  
 • 1/262144" = 100' DISPLACEMENT  
 • 1/524288" = 100' SEPARATION  
 • 1/1048576" = 100' GAPS  
 • 1/2097152" = 100' CRACKS  
 • 1/4194304" = 100' HOLES  
 • 1/8388608" = 100' PITS  
 • 1/16777216" = 100' CAVITIES  
 • 1/33554432" = 100' VENTILATION  
 • 1/67108864" = 100' DRAINAGE  
 • 1/134217728" = 100' FLOODING  
 • 1/268435456" = 100' EROSION  
 • 1/536870912" = 100' COLLAPSE  
 • 1/1073741824" = 100' FAILURE  
 • 1/2147483648" = 100' DESTRUCTION  
 • 1/4294967296" = 100' ANNIHILATION  
 • 1/8589934592" = 100' EXTINCTION  
 • 1/17179869184" = 100' DESTRUCTION  
 • 1/34359738368" = 100' DESTRUCTION  
 • 1/68719476736" = 100' DESTRUCTION  
 • 1/137438953472" = 100' DESTRUCTION  
 • 1/274877906944" = 100' DESTRUCTION  
 • 1/549755813888" = 100' DESTRUCTION  
 • 1/1099511627776" = 100' DESTRUCTION  
 • 1/2199023255552" = 100' DESTRUCTION  
 • 1/4398046511104" = 100' DESTRUCTION  
 • 1/8796093022208" = 100' DESTRUCTION  
 • 1/17592186444416" = 100' DESTRUCTION  
 • 1/35184372888832" = 100' DESTRUCTION  
 • 1/70368745777664" = 100' DESTRUCTION  
 • 1/140737491555328" = 100' DESTRUCTION  
 • 1/281474983110656" = 100' DESTRUCTION  
 • 1/562949966221312" = 100' DESTRUCTION  
 • 1/1125899932442624" = 100' DESTRUCTION  
 • 1/2251799864885248" = 100' DESTRUCTION  
 • 1/4503599729770496" = 100' DESTRUCTION  
 • 1/9007199459540992" = 100' DESTRUCTION  
 • 1/18014398919081984" = 100' DESTRUCTION  
 • 1/36028797838163968" = 100' DESTRUCTION  
 • 1/72057595676327936" = 100' DESTRUCTION  
 • 1/14411519135265584" = 100' DESTRUCTION  
 • 1/28823038270531168" = 100' DESTRUCTION  
 • 1/57646076541062336" = 100' DESTRUCTION  
 • 1/115292153082124672" = 100' DESTRUCTION  
 • 1/230584306164249344" = 100' DESTRUCTION  
 • 1/461168612328498688" = 100' DESTRUCTION  
 • 1/922337224656997376" = 100' DESTRUCTION  
 • 1/1844674449313994752" = 100' DESTRUCTION  
 • 1/3689348898627989504" = 100' DESTRUCTION  
 • 1/7378697797255979008" = 100' DESTRUCTION  
 • 1/14757395594511958016" = 100' DESTRUCTION  
 • 1/29514791189023916032" = 100' DESTRUCTION  
 • 1/59029582378047832064" = 100' DESTRUCTION  
 • 1/118059164756095664128" = 100' DESTRUCTION  
 • 1/236118329512191328256" = 100' DESTRUCTION  
 • 1/472236659024382656512" = 100' DESTRUCTION  
 • 1/944473318048765313024" = 100' DESTRUCTION  
 • 1/1888946636097530626048" = 100' DESTRUCTION  
 • 1/3777893272195061252096" = 100' DESTRUCTION  
 • 1/7555786544390122504192" = 100' DESTRUCTION  
 • 1/15111573088780245008384" = 100' DESTRUCTION  
 • 1/30223146177560490016768" = 100' DESTRUCTION  
 • 1/60446292355120980033536" = 100' DESTRUCTION  
 • 1/120892584710241960671072" = 100' DESTRUCTION  
 • 1/241785169420483921342144" = 100' DESTRUCTION  
 • 1/483570338840967842684288" = 100' DESTRUCTION  
 • 1/967140677681935685368576" = 100' DESTRUCTION  
 • 1/1934281355363871370737152" = 100' DESTRUCTION  
 • 1/3868562710727742741474304" = 100' DESTRUCTION  
 • 1/7737125421455485482948608" = 100' DESTRUCTION  
 • 1/15474250842910970965897216" = 100' DESTRUCTION  
 • 1/30948501685821941931794432" = 100' DESTRUCTION  
 • 1/6189700337164388386358864" = 100' DESTRUCTION  
 • 1/12379400674328776772717728" = 100' DESTRUCTION  
 • 1/24758801348457553545435456" = 100' DESTRUCTION  
 • 1/49517602696915107090870912" = 100' DESTRUCTION  
 • 1/99035205393830214181741824" = 100' DESTRUCTION  
 • 1/198070410787660423635483648" = 100' DESTRUCTION  
 • 1/396140821575320847270967296" = 100' DESTRUCTION  
 • 1/792281643150641694541934592" = 100' DESTRUCTION  
 • 1/158456328700128338908386904" = 100' DESTRUCTION  
 • 1/316912657400256677816773808" = 100' DESTRUCTION  
 • 1/633825314800513355633547616" = 100' DESTRUCTION  
 • 1/1267650629601026711267087232" = 100' DESTRUCTION  
 • 1/2535301259202053422534174464" = 100' DESTRUCTION  
 • 1/5070602518404106845068348928" = 100' DESTRUCTION  
 • 1/10141205036808213690136737856" = 100' DESTRUCTION  
 • 1/20282410073616427380273475712" = 100' DESTRUCTION  
 • 1/40564820147232854760546951424" = 100' DESTRUCTION  
 • 1/81129640294465709521093902848" = 100' DESTRUCTION  
 • 1/162259284988931419042187805696" = 100' DESTRUCTION  
 • 1/324518569977862838084376111392" = 100' DESTRUCTION  
 • 1/649037139955725676168752222784" = 100' DESTRUCTION  
 • 1/1298074279111451352337524455568" = 100' DESTRUCTION  
 • 1/2596148558222902704675048911136" = 100' DESTRUCTION  
 • 1/5192297116445805409350097822272" = 100' DESTRUCTION  
 • 1/10384594232891610818700195444544" = 100' DESTRUCTION  
 • 1/20769188465783221637400390888896" = 100' DESTRUCTION  
 • 1/41538376931566443274800791777984" = 100' DESTRUCTION  
 • 1/83076753863132886549601583555968" = 100' DESTRUCTION  
 • 1/166153507726265773099203167111936" = 100' DESTRUCTION  
 • 1/332307015452531546198406334223872" = 100' DESTRUCTION  
 • 1/664614030905063092396812684447744" = 100' DESTRUCTION  
 • 1/132922806181012618479362536889536" = 100' DESTRUCTION  
 • 1/265845612362025236958725073779072" = 100' DESTRUCTION  
 • 1/531691224724050473917450147558144" = 100' DESTRUCTION  
 • 1/1063382449448100947834900295116288" = 100' DESTRUCTION  
 • 1/2126764898896201895669800590232576" = 100' DESTRUCTION  
 • 1/4253529797792403791339601180465152" = 100' DESTRUCTION  
 • 1/8507059595584807582679202360930304" = 100' DESTRUCTION  
 • 1/17014119191169615165358404721860608" = 100' DESTRUCTION  
 • 1/34028238382339230330716809443721216" = 100' DESTRUCTION  
 • 1/680564767646784606614337888874424384" = 100' DESTRUCTION  
 • 1/1361129535293569213228675677748848672" = 100' DESTRUCTION  
 • 1/272225907058713842645735135549769344" = 100' DESTRUCTION  
 • 1/54445181411742768529147027109953888" = 100' DESTRUCTION  
 • 1/108890362823485571058294054219907776" = 100' DESTRUCTION  
 • 1/2177807256469711421165580108438155552" = 100' DESTRUCTION  
 • 1/4355614512939422842331160216863111104" = 100' DESTRUCTION  
 • 1/8711229025878845684662320433726222208" = 100' DESTRUCTION  
 • 1/17422458457757691369326408675452444416" = 100' DESTRUCTION  
 • 1/34844916915515382738652817350904888832" = 100' DESTRUCTION  
 • 1/69689833831030765477305634701809777664" = 100' DESTRUCTION  
 • 1/139379667662061530954611268436195555296" = 100' DESTRUCTION  
 • 1/278759335324123061909222536872391111104" = 100' DESTRUCTION  
 • 1/557518670648246123818184473744782222208" = 100' DESTRUCTION  
 • 1/111503734129649224736367284748964444416" = 100' DESTRUCTION  
 • 1/22300746825929844947273456949792888832" = 100' DESTRUCTION  
 • 1/44601493651859689894546912899585777664" = 100' DESTRUCTION  
 • 1/8920298730371937978910382579917155555296" = 100' DESTRUCTION  
 • 1/1784059746073875957822076155983411111104" = 100' DESTRUCTION  
 • 1/356811949214775191564415311196682222208" = 100' DESTRUCTION  
 • 1/713623898429550383128830622393364444416" = 100' DESTRUCTION  
 • 1/142724779685900076625766124678672888832" = 100' DESTRUCTION  
 • 1/285449559371800153251532249357347777664" = 100' DESTRUCTION  
 • 1/5708991187436003065030644967146955555296" = 100' DESTRUCTION  
 • 1/1141798377487200613006068993429111111104" = 100' DESTRUCTION  
 • 1/22835967549744012260121379868582222208" = 100' DESTRUCTION  
 • 1/456719350994880245202427597371644444416" = 100' DESTRUCTION  
 • 1/91343870198976049040485519474328888832" = 100' DESTRUCTION  
 • 1/182687740397952098080971039448657777664" = 100' DESTRUCTION  
 • 1/3653754807959041961619420788973155555296" = 100' DESTRUCTION  
 • 1/7307509615918083923238841577946311111104" = 100' DESTRUCTION  
 • 1/14615019231836167464476831555892222208" = 100' DESTRUCTION  
 • 1/292300384636723349289536631177844444416" = 100' DESTRUCTION  
 • 1/58460076927344669857907326235568888832" = 100' DESTRUCTION  
 • 1/116920153854689339715814645247137777664" = 100' DESTRUCTION  
 • 1/2338403077093786794316329048942755555296" = 100' DESTRUCTION  
 • 1/4676806154187573588632658097885511111104" = 100' DESTRUCTION  
 • 1/93536123083751471772653161957710222208" = 100' DESTRUCTION  
 • 1/187072246167502943545306323915444444416" = 100' DESTRUCTION  
 • 1/3741444923350058870906126678288888832" = 100' DESTRUCTION  
 • 1/7482889846700117741812533616577777664" = 100' DESTRUCTION  
 • 1/149657796934002348376250672331555555296" = 100' DESTRUCTION  
 • 1/299315593868004696752501346663111111104" = 100' DESTRUCTION  
 • 1/598631187736009393505002693326222208" = 100' DESTRUCTION  
 • 1/11972623754720187700100053866444444416" = 100' DESTRUCTION  
 • 1/2394524750944037540020010773288888832" = 100' DESTRUCTION  
 • 1/478904950188807508004002154657777664" = 100' DESTRUCTION  
 • 1/95780990037761501600800430931555555296" = 100' DESTRUCTION  
 • 1/1915619800755230032016008616288888832" = 100' DESTRUCTION  
 • 1/38312396015104600640320172325777664" = 100' DESTRUCTION  
 • 1/76624792030209201280640344651555555296" = 100' DESTRUCTION  
 • 1/15324958406041840256128069302311111104" = 100' DESTRUCTION  
 • 1/30649916812083680512256236046222208" = 100' DESTRUCTION  
 • 1/6129983362416736102451251221244444416" = 100' DESTRUCTION  
 • 1/1225996672833347220481024244248888832" = 100' DESTRUCTION  
 • 1/245199334566669444096204848849777664" = 100' DESTRUCTION  
 • 1/49039866913333888819240969769955555296" = 100' DESTRUCTION  
 • 1/98079733826667777638481939539911111104" = 100' DESTRUCTION  
 • 1/196159467653335555376823879198222208" = 100' DESTRUCTION  
 • 1/3923189353066711107536477595964444416" = 100' DESTRUCTION  
 • 1/7846378706133422215072955191928888832" = 100' DESTRUCTION  
 • 1/156927574122668444301459102384777664" = 100' DESTRUCTION  
 • 1/31385514824533688860291820476955555296" = 100' DESTRUCTION  
 • 1/62771029649067377720483640953911111104" = 100' DESTRUCTION  
 • 1/125542059298134755440972781078222208" = 100' DESTRUCTION  
 • 1/25108411859626951088814556215644444416" = 100' DESTRUCTION  
 • 1/5021682371925390217776910443128888832" = 100' DESTRUCTION  
 • 1/1004336474385078035555382888625777664" = 100' DESTRUCTION  
 • 1/200867294877015607111116577735155555296" = 100' DESTRUCTION  
 • 1/401734589754031214222231155570311111104" = 100' DESTRUCTION  
 • 1/803469179508062428444462311111111104" = 100' DESTRUCTION  
 • 1/16069383980161245688892462222222208" = 100' DESTRUCTION  
 • 1/32138767960322491377784924444444416" = 100' DESTRUCTION  
 • 1/6427753592064498275556984888888832" = 100' DESTRUCTION  
 • 1/1285550718412996555111377397777664" = 100' DESTRUCTION  
 • 1/25711014368259931102247551955555296" = 100' DESTRUCTION  
 • 1/514220287365198622044951031111111104" = 100' DESTRUCTION  
 • 1/1028440574730397244089902062222208" = 100' DESTRUCTION  
 • 1/20568811494607944881798041244444416" = 100' DESTRUCTION  
 • 1/4113762298921588976396082488888832" = 100' DESTRUCTION  
 • 1/822752459784317795279216497777664" = 100' DESTRUCTION  
 • 1/1645504915686355590558431955555296" = 100' DESTRUCTION  
 • 1/32910098313727111811168631111111104" = 100' DESTRUCTION  
 • 1/65820196627454223622337262222208" = 100' DESTRUCTION  
 • 1/1316403932549084472446674444444416" = 100' DESTRUCTION  
 • 1/263280786509816894489334888888832" = 100' DESTRUCTION  
 • 1/5265615730196337889786977777664" = 100' DESTRUCTION  
 • 1/10531231460392677795773955555296" = 100' DESTRUCTION  
 • 1/2106246292078535559154791111111104" = 100' DESTRUCTION  
 • 1/421249258415707111830958182222208" = 100' DESTRUCTION  
 • 1/8424985168314142236619163444444416" = 100' DESTRUCTION  
 • 1/1684997033662828447323832688888832" = 100' DESTRUCTION  
 • 1/33699940673256568946476653777664" = 100' DESTRUCTION  
 • 1/6739988134651313789293330755555296" = 100' DESTRUCTION  
 • 1/13479976269302627778586661511111104" = 100' DESTRUCTION  
 • 1/269599525386052555571733330222208" = 100' DESTRUCTION  
 • 1/53919905077210511113446666044444416" = 100' DESTRUCTION  
 • 1/10783981015442102226893332088888832" = 100' DESTRUCTION  
 • 1/215679620308842044537866641777664" = 100' DESTRUCTION  
 • 1/4313592406176840890757333235555296" = 100' DESTRUCTION  
 • 1/86271848123536817815146664711111104" = 100' DESTRUCTION  
 • 1/17254369624707363563029332944444416" = 100' DESTRUCTION  
 • 1/3450873924941472712605866588888832" = 100' DESTRUCTION  
 • 1/69017478498829454252117331777664" = 100' DESTRUCTION  
 • 1/1380349569976589085043466355555296" = 100' DESTRUCTION  
 • 1/2760699139931178170086893111111104" = 100' DESTRUCTION  
 • 1/55213982798623563401737862222208" =

**NOTES**

- 1) Roofing details based on soil conditions of compact fine sand, 10% moisture, 100% compaction. All details shall be based on 150 psf live load, 10 psf dead load, and 10 psf snow load and windload as shown.
- 2) Provide 1/2" gap detail for end of truss purlin. Gap shall be 1/4" wide, 1/2" deep, to allow.
- 3) Attached eave with 3/8" x 1/4" (1" max/long).
- 4) Corrosion protection to be 316 SS, unpainted metal piping, (not to extend more than 1/2" from edge, 1" @ 1/2" @).
- 5) All eave shall have a horizontal finish surface.

**TYPICAL GUSSET DETAIL**



**GENERAL NOTES**

- 1. ALL STEEL SHALL BE A36 UNLESS OTHERWISE SPECIFIED.
- 2. ALL WELDS SHALL BE E70XX UNLESS OTHERWISE SPECIFIED.
- 3. ALL CONNECTIONS SHALL BE DESIGNED TO RESIST ALL APPLIED LOADS AND MOMENTS.
- 4. ALL CONNECTIONS SHALL BE DESIGNED TO RESIST ALL APPLIED LOADS AND MOMENTS.
- 5. ALL CONNECTIONS SHALL BE DESIGNED TO RESIST ALL APPLIED LOADS AND MOMENTS.
- 6. ALL CONNECTIONS SHALL BE DESIGNED TO RESIST ALL APPLIED LOADS AND MOMENTS.
- 7. ALL CONNECTIONS SHALL BE DESIGNED TO RESIST ALL APPLIED LOADS AND MOMENTS.
- 8. ALL CONNECTIONS SHALL BE DESIGNED TO RESIST ALL APPLIED LOADS AND MOMENTS.
- 9. ALL CONNECTIONS SHALL BE DESIGNED TO RESIST ALL APPLIED LOADS AND MOMENTS.
- 10. ALL CONNECTIONS SHALL BE DESIGNED TO RESIST ALL APPLIED LOADS AND MOMENTS.

2012 NY State Reg. Code (115 reg. - Sec. 9) - BSA Code J

Innovative Engineering Solutions, LTD.  
61 Mills Water Court  
New Canaan, NY 07641  
(845) 485-1470

10'-0" x 30' Overall Height  
Back to Back Structure @ 30'-0" Overall Height

Client: News Advertising

THIS PROJECT IS THE PROPERTY OF INNOVATIVE ENGINEERING SOLUTIONS, LTD. ALL RIGHTS ARE RESERVED. NO PART OF THIS DOCUMENT SHALL BE REPRODUCED OR TRANSMITTED IN ANY FORM OR BY ANY MEANS, WITHOUT THE WRITTEN CONSENT FROM THE ABOVE CLIENT.

THE CONTRACTOR SHALL NOT BE RESPONSIBLE FOR THE ACCURACY AND COMPLETENESS OF THIS DOCUMENT.

DATE: 08/13/2016

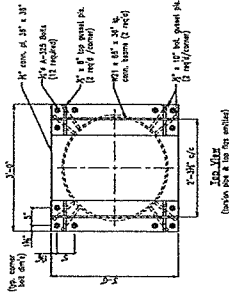
PROJECT NO: 16000000

CONTRACT NO: CML

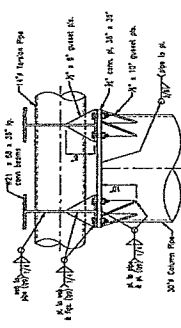
PROJECT NO: 16000000

DATE: 08/13/2016

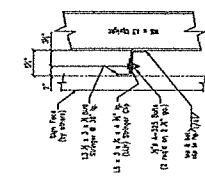
PROJECT NO: 16000000



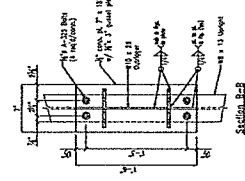
6 Rear Ledger Connection



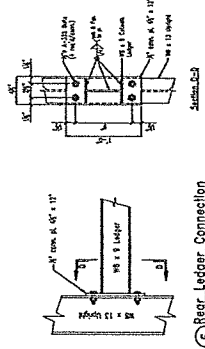
3 Column Connection



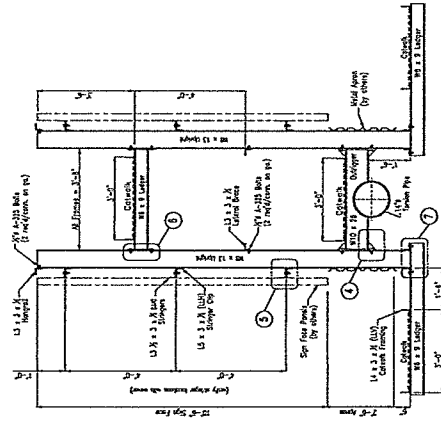
5 Stringer Connection



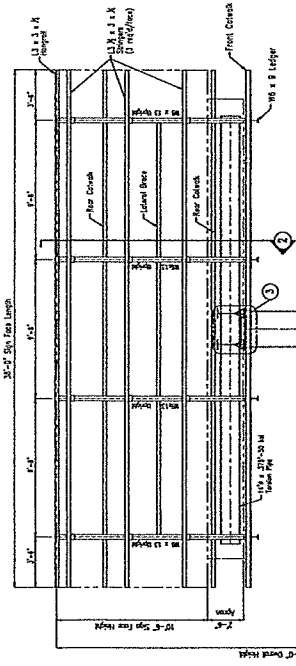
4 Outrigger & Upright Connection



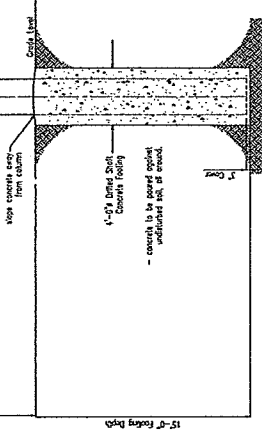
7 Front Ledger Connection



2 Frame Detail



1 Front Elevation



4'-0" Deep Steel Concrete Footing

- concrete to be good quality precast concrete, all steel.

