

A B C D E F G H

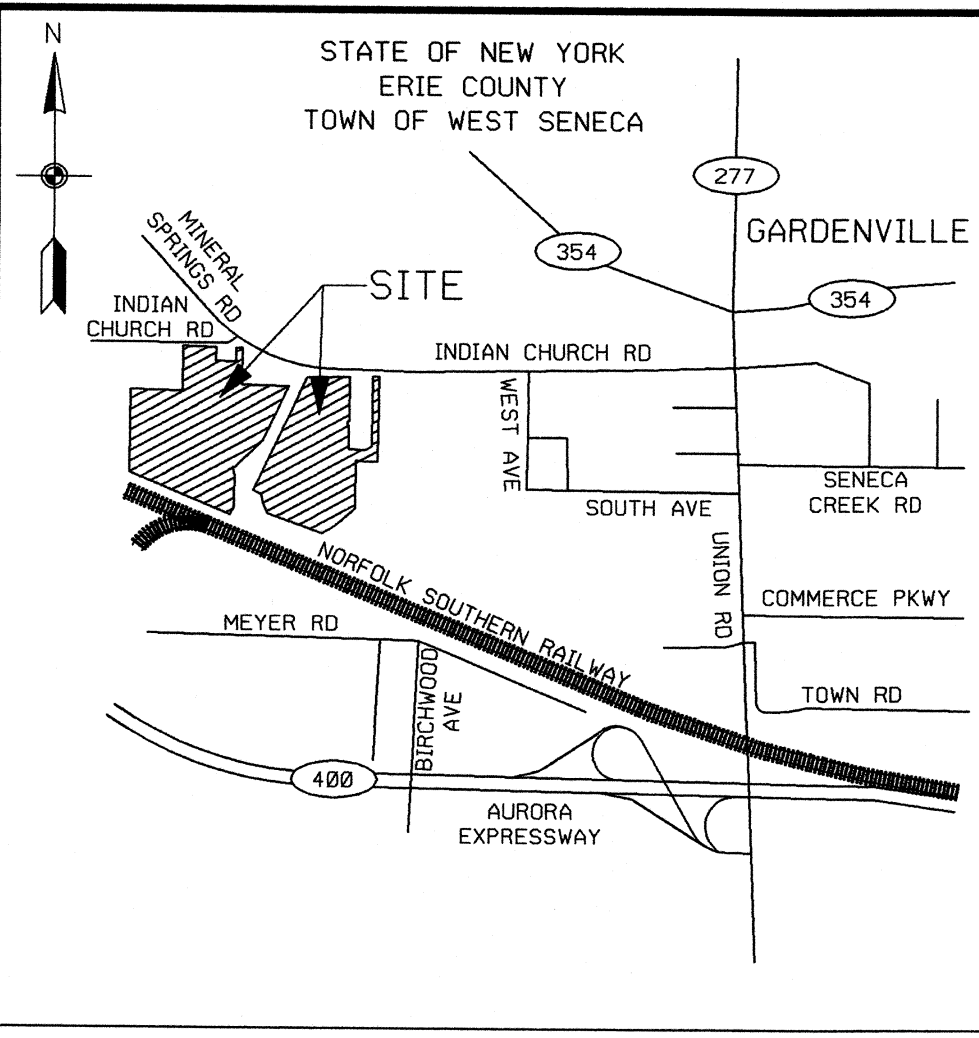
- LEGEND**
- PROPOSED OVERHEAD ELECTRIC LINES
 - NMPC PROPERTY LINES
 - ADJOINER PROPERTY LINES (APPROXIMATE)
 - 100' WETLAND BUFFER
 - EXISTING OVERHEAD ELECTRIC
 - EXISTING FENCE
 - NEW FENCE
 - EXISTING SWALE LINE
 - NEW SWALE LINE
 - NORFOLK SOUTHERN RAILWAY
 - TREE LINE
 - WOOD DISTRIBUTION POLE
 - TRANSMISSION POLE
 - ELECTRIC MANHOLE
 - SANITARY SEWER MANHOLE
 - DECIDUOUS TREE
 - WETLANDS
 - EXISTING STEEL TRANSMISSION STRUCTURE
 - NEW STEEL TRANSMISSION STRUCTURE

BUILDING & EQUIPMENT HEIGHTS

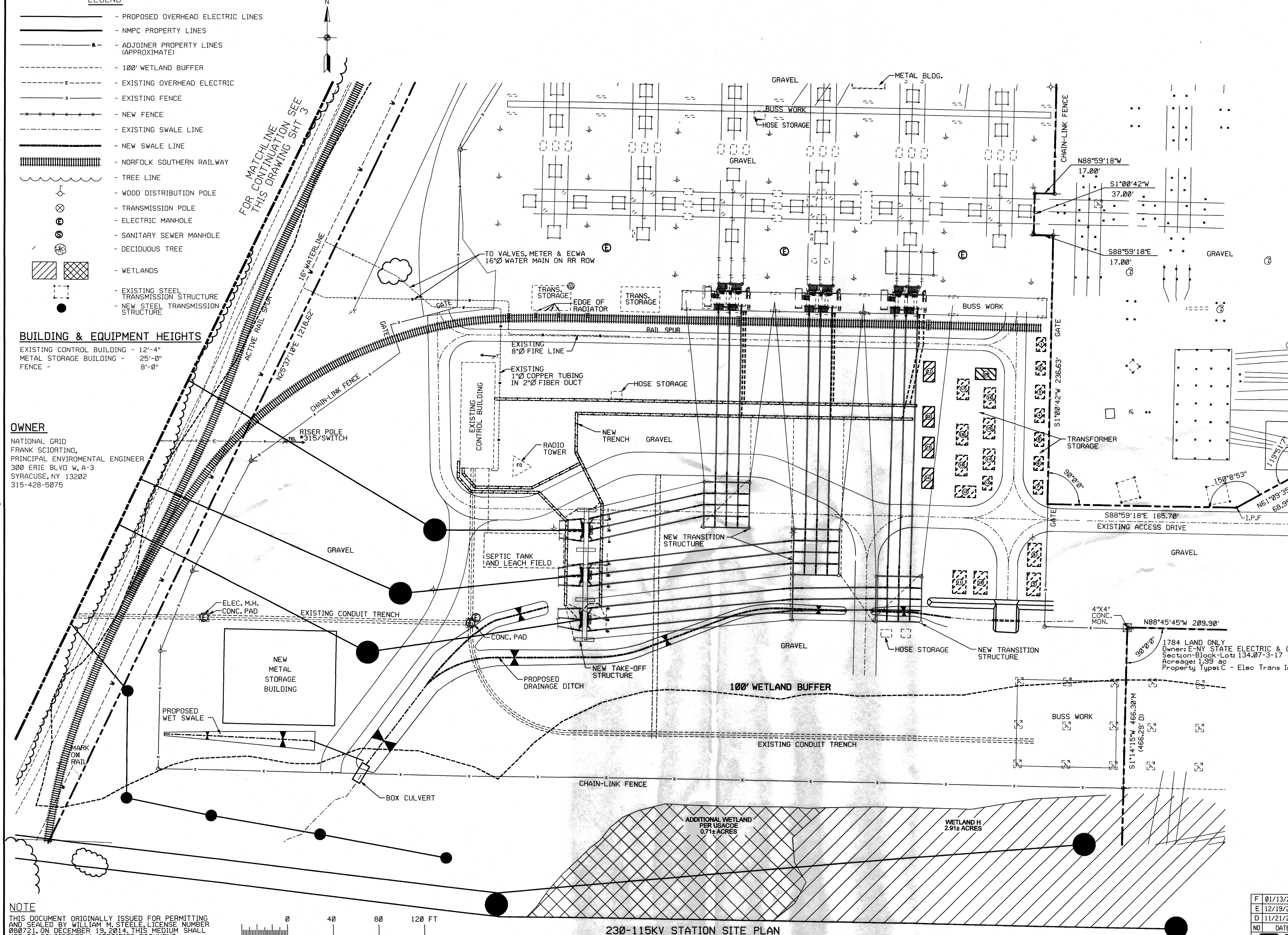
EXISTING CONTROL BUILDING - 12'-4"
 METAL STORAGE BUILDING - 25'-0"
 FENCE - 8'-0"

OWNER

NATIONAL GRID
 FRANK SCIORTINO,
 PRINCIPAL ENVIRONMENTAL ENGINEER
 300 ERIE BLVD W, A-3
 SYRACUSE, NY 13202
 315-428-5075



LOCATION MAP
 SCALE: N.T.S.
 LAT: 42° 51' 00"
 LONG: 78° 46' 23"



STATE OF NEW YORK
 WILLIAM M. STEELE
 LICENSED PROFESSIONAL ENGINEER
 080721
 1-13-15

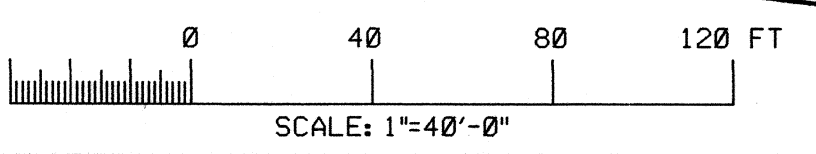
IT IS A VIOLATION OF NYS EDUCATION LAW FOR ANY PERSON, UNLESS HE IS ACTING UNDER THE DIRECTION OF A LICENSED PROFESSIONAL ENGINEER, TO ALTER AN ITEM ON THIS DRAWING IN ANY WAY.

FOR TOWN REVIEW
 NOT FOR CONSTRUCTION

- NOTES**
1. PLANIMETRIC AND TOPOGRAPHIC INFORMATION SHOWN HEREON BASED ON PHOTODRAMMETRIC AERIAL MAPPING PERFORMED BY THE JAMES W. SEWALL COMPANY DATED APRIL 2010.
 2. THE WETLANDS WERE FIELD DELINEATED BY STANTEC IN MARCH 2010 AND WERE CONFIRMED BY NYDEC IN FEB 2012 AND BY USACE IN JUNE 2012.
 3. PROPERTY LINES SHOWN HEREON FOR GARDENVILLE SUBSTATION BASED ON AN ACTUAL SURVEY PERFORMED BY THE NATIONAL GRID SURVEY DEPARTMENT IN THE SPRING OF 2010.
 4. FOR ADDITIONAL DETAIL AT THE 230-115KV STATION SEE GRADING DRAWING D-69361-W.

NOTE

THIS DOCUMENT ORIGINALLY ISSUED FOR PERMITTING AND SEALED BY WILLIAM M. STEELE, LICENSE NUMBER 080721, ON DECEMBER 19, 2014. THIS MEDIUM SHALL NOT BE CONSIDERED A CERTIFIED DOCUMENT.



230-115KV STATION SITE PLAN

F	01/13/2015	RE-ISSUED FOR PERMIT	HHT	BTT	WMS	MP
E	12/19/2014	ISSUED FOR PERMIT	JE	BTT	WMS	MP
D	11/21/2014	ISSUED FOR CLIENT REVIEW	JEW	BTT	JHL	MP
NO	DATE	REVISIONS AND RECORD OF ISSUE	DRN	DES	CHK	PDE
BLACK & VEATCH CORPORATION PROJECT #178393			ENGINEER	BTT	DRAWN	JOF
			CHECKED	JHL	DATE	06/02/2014

			B&V DES. APPROVED JOHN S. REED B&V DR. APPROVED B&V WRH CK. APPROVED			PREPARED BY nationalgrid ACCOUNT NUMBER C05156-0006930141			NMPC GARDENVILLE - 115KV STATION ORIGINAL ISSUE DATE 01/13/2015		
			01/13/15 ISSUED FOR PERMITTING B&V DR. APPROVED B&V WRH CK. APPROVED			115KV STATION FILE INDEX 7.1-G7-M27			115KV & NEW GARDENVILLE STATIONS DRAWING NUMBER D-70001-W		
REFERENCE DESCRIPTION			DRAWING NUMBER			NO. DATE DESCRIPTION OF ISSUE OR REVISION			SHEET NUMBER 4 CONT'D ON 5		

A B C D E F G H

CONSTRUCTION ACTIVITY SHALL BE PERMITTED ONLY IN ACCORDANCE WITH THE NATIONAL GRID'S NATIONAL GRID POLICY. IT IS TO BE USED BY AUTHORIZED CONTRACTORS FOR NATIONAL GRID ONLY IN CONNECTION WITH THE SPECIFIC PROJECT FOR WHICH IT HAS BEEN TRANSMITTED. ANY OTHER USE, ITS TRANSMISSION TO THIRD PARTIES, OR ITS REPRODUCTION WITHOUT PRIOR WRITTEN AUTHORIZATION OF NATIONAL GRID IS STRICTLY PROHIBITED.