



1 EAST ELEVATION
A-200 SCALE: 1/8"=1'-0" 135'-9"

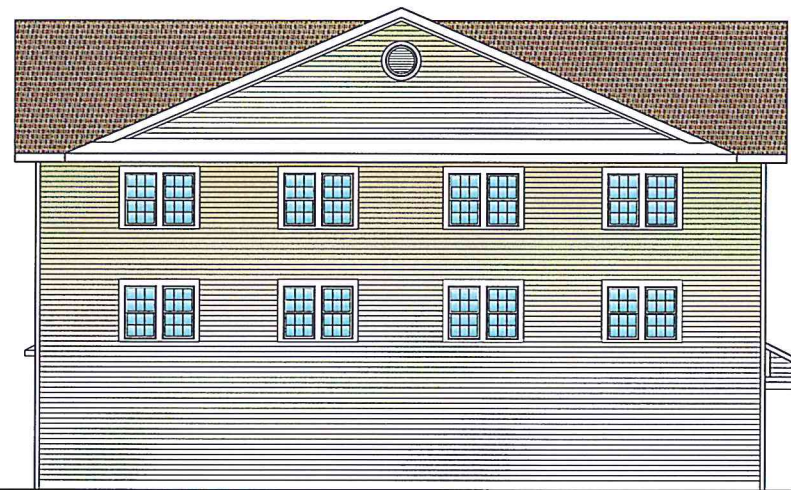
siding - certainteed, sandstone beige
 block - barnes & cone, split faced baltic blend
 roofing - timberline, high definition; weathered wood
 trim & column covers - ozek



2 NORTH ELEVATION
A-200 SCALE: 1/8"=1'-0"



3 WEST ELEVATION
A-200 SCALE: 1/8"=1'-0"



4 SOUTH ELEVATION
A-200 SCALE: 1/8"=1'-0"

ADELMANN PALMSANO ARCHITECTS
 NOTICE
 DRAWING ADAPTATION
 THIS DOCUMENT IS SOLELY THE PROPERTY
 OF ADELMANN PALMSANO ARCHITECTS,
 PC AND IS ATTACHED WITH A PROFESSIONAL
 SEAL, AUTHORIZING ITS ACCURACY.
 ANY LICENSEE WHO ALTERS THIS
 DOCUMENT IS REQUIRED BY LAW TO OBTAIN
 HIS OR HER SEAL AND THE NOTATION
 "ALTERED BY" FOLLOWED BY HIS OR HER
 SIGNATURE AND SPECIFIC DESCRIPTION OF
 THE ALTERATIONS.

REVISIONS	DATE	BY
1		
2		
3		
4		
5		
6		
7		

PROJECT ARCHITECT SA	PROJECT MANAGER DFK	DATE DRAWN 12-3-15	DATE ISSUED 11
		DRAWN BY DFK	SCALE 1/8" = 1'-0"

NOT FOR
 REGULATORY
 APPROVAL,
 PERMITTING OR
 CONSTRUCTION



AP Architects
 ellcott square building
 295 main street
 suite 222
 buffalo, n.y. 14203
 TEL: 716-854-0262
 FAX: 716-852-2829
 WWW.APARCHITECTS.COM

PREPARED FOR

 ELLICOTT
 DEVELOPMENT

PROJECT
 MULTI USE BUILDING
 SLADE AVENUE
 WEST SENEGA, NEW YORK
 TITLE OF DRAWING
 PROPOSED ELEVATIONS

PROJECT NO.
 2015-67
 DRAWING NO.
 A200A