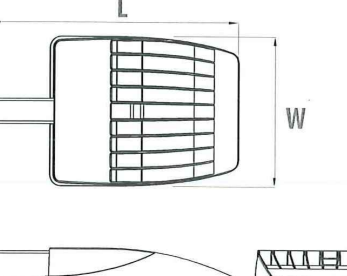




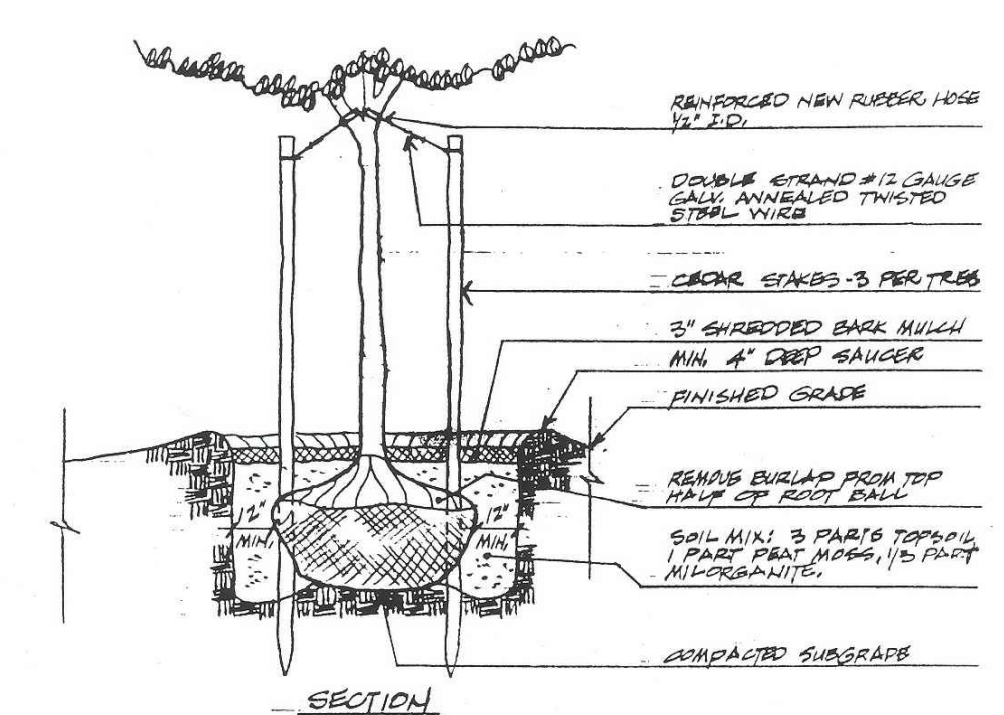
**ESX1 LED**  
Area Luminaire



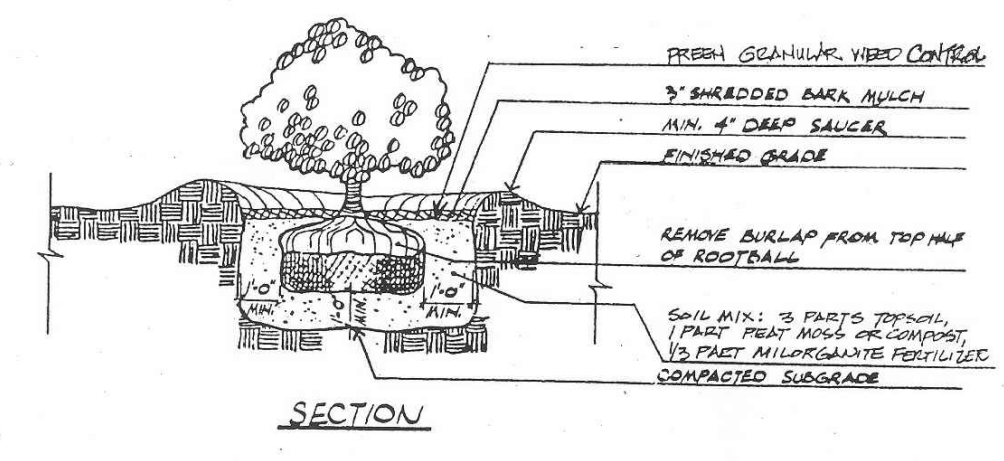
**Specifications**  
 EPA 0.40 ft (0.04 m)<sup>2</sup>  
 Length: 19.9" (50.5 cm)  
 Width: 12" (30.5 cm)  
 Height: 2.9" (7.4 cm)  
 Weight: 11.2 lbs (5.1 kg)



**Introduction**  
 The ESX1 LED area luminaire provides the combination of best product, best price and best delivery. ESX1 is ideal for one-for-one replacement of HID area lighting and provides up to 76% energy savings, long service life and fast payback.  
 The ESX1 delivers 8,000 to 25,000 lumens allowing it to replace 150W to 400W HID luminaires. All ESX1 luminaires feature adjustable light output, providing two light levels from one product, allowing greater flexibility in the field and on distributors' shelves. All luminaires feature a reversible arm that allows for mounting on both round and square poles. Eight configurations of ESX1 luminaires are stocked in Acuity Brands distribution centers.

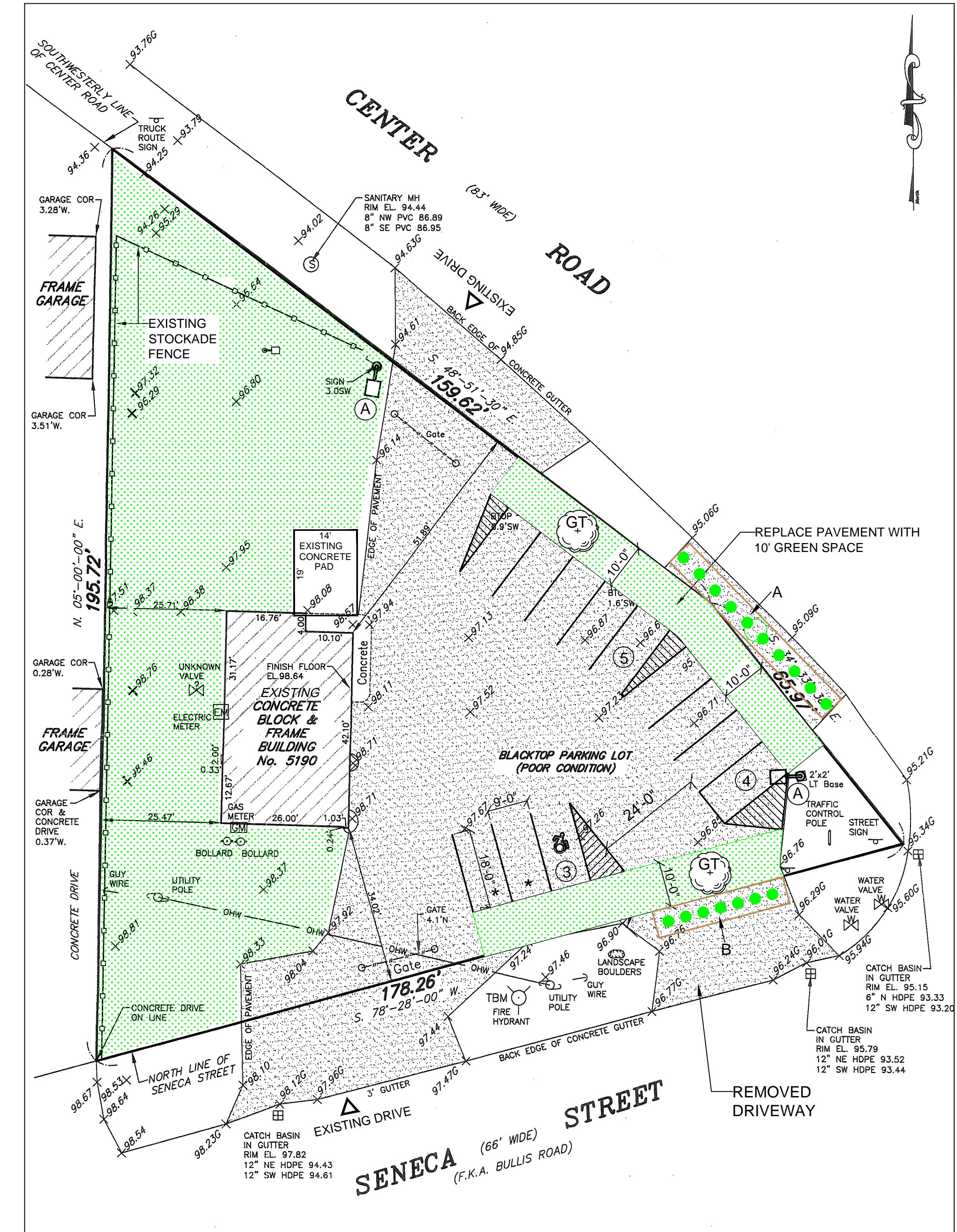


**TREE PLANTING**



**SHRUB PLANTING DETAIL**

<b>SITE LIGHTING (A)</b>	
FIXTURE	LITHONIA ESX1LED AREA LUMINAIRE "DARK SKY" 200W, BRONZE, 120/208V
POLE	4" SQUARE, BRONZE, 20" HIGH



**SITE PLAN**  
SCALE: 1" = 20'-0"

- BUILDING & BUSINESS NOTES**
1. THERE IS AN EXISTING RESTROOM WITH EXTERIOR ACCESS.
  2. THERE IS AN EXISTING INTERIOR RESTROOM THAT WILL BE CONVERTED TO HANDICAP ACCESSIBILITY.
  3. THERE ARE 2 EMPLOYEES.
  4. HOURS OF OPERATION: 8:30AM - 6:30PM MONDAY - FRIDAY.
  5. THERE WILL BE 12 PARKING SPACES.
  6. THERE WILL BE 2 EMPLOYEE PARKING SPACES (\*).



**SOUTHEAST VIEW**  
**EXISTING ELEVATION**  
SCALE: N. T. S.



**NORTHEAST VIEW**  
**EXISTING ELEVATION**  
SCALE: N. T. S.

PLANT LIST					
KEY	QTY.	BOTANICAL NAME	COMMON NAME	MIN. SIZE	REMARKS
GT	2	GLEDTISIA TRICANTHOS INERMIS "SKYLINE"	SKYLINE HONEY LOCUST	2-1/2" CAL.	B & B
A	10	EXISTING SCHRUBS, 24" - 30"Ø			
B	7	EXISTING SCHRUBS, 24" - 30"Ø			

Drawing Revision:	
No.	Date
By	Remarks

**JAMES ALLEN RUMSEY ARCHITECT**  
5729 EAST RIVER ROAD  
GRAND ISLAND, NY 14072

© COPYRIGHT 2017  
 JAMES ALLEN RUMSEY, ARCHITECT  
 NO PART OF THIS DRAWING MAY BE REPRODUCED OR COPIED IN ANY FORM BY ANY MEANS WITHOUT THE WRITTEN PERMISSION OF THE ARCHITECT.

**F. J. WAILAND ASSOCIATES INC.**  
 CONSTRUCTION MANAGEMENT  
 5922 SENECA STREET  
 WEST SENECA, NEW YORK 14224  
 (716) 674-9255

**TRANSIT AUTO DETAILING**  
 PARKING FOR EXISTING BUILDING  
 5190 SENECA STREET  
 WEST SENECA, NEW YORK

**SITE PLAN**

Project No.	Drawing No.
####	SP-1
Drawn By	Date
ccb	07 JUL 2021