



MOVING & STORAGE AT WEST SENECA
2970 Transit Rd., West Seneca, NY 14224



MOVING & STORAGE AT WEST SENECA

2970 Transit Rd., West Seneca, NY 14224



ARCHITECTURAL WOOD PANELING
ENHANCES RETAIL APPEARANCE

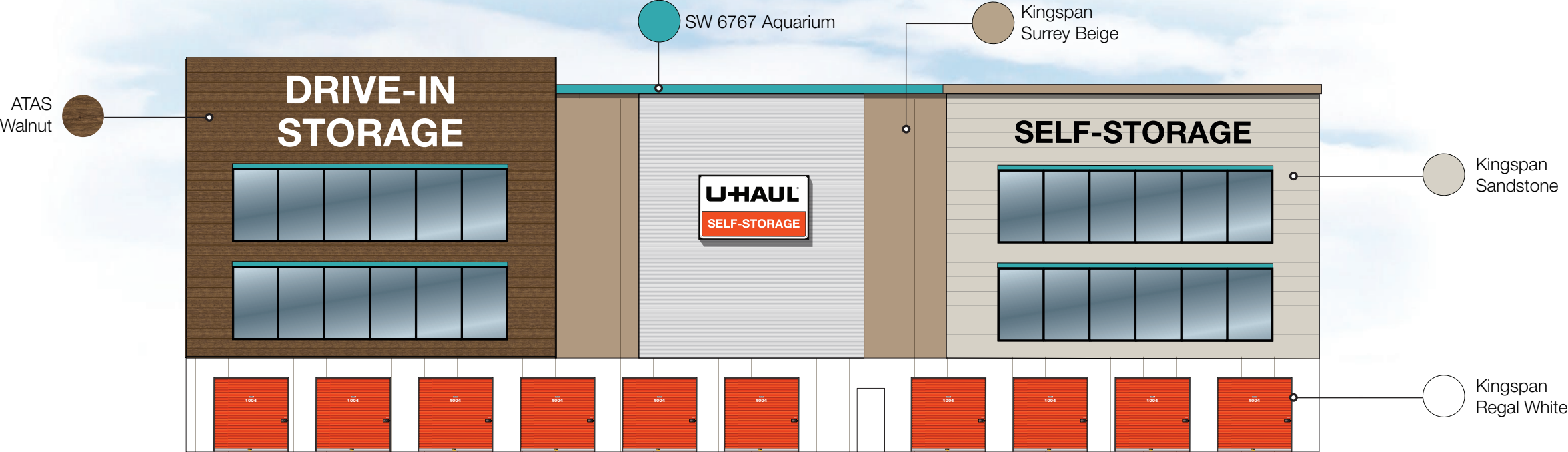
ARCHITECTURAL PANELING
PROVIDES ARTICULATION, DEPTH
AND TEXTURE TO THE BUILDING

IMP EXCEEDS SUSTAINABLE LEED
STANDARDS BY PROVIDING
SUPERIOR R-VALUE INSULATION
FOR GREATER THERMAL
EFFICIENCY

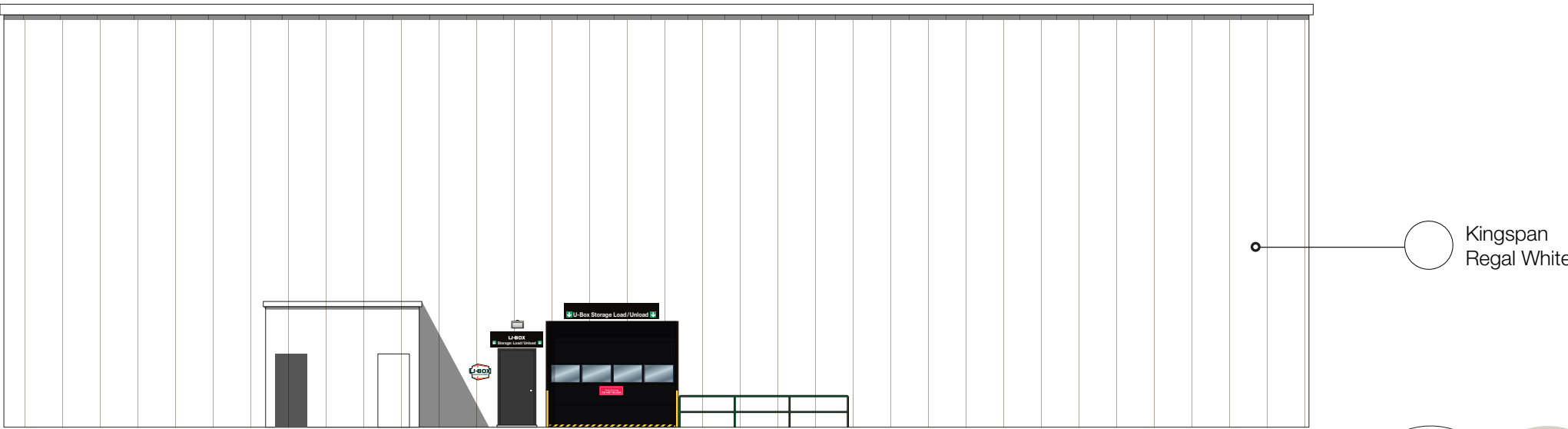
ARCHITECTURAL FENESTRATION
TO ENHANCE RETAIL UNIFORMITY
IN THE AREA



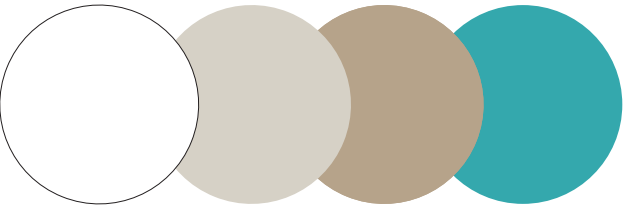
MOVING & STORAGE AT WEST SENECA
2970 Transit Rd., West Seneca, NY 14224



EAST ELEVATION



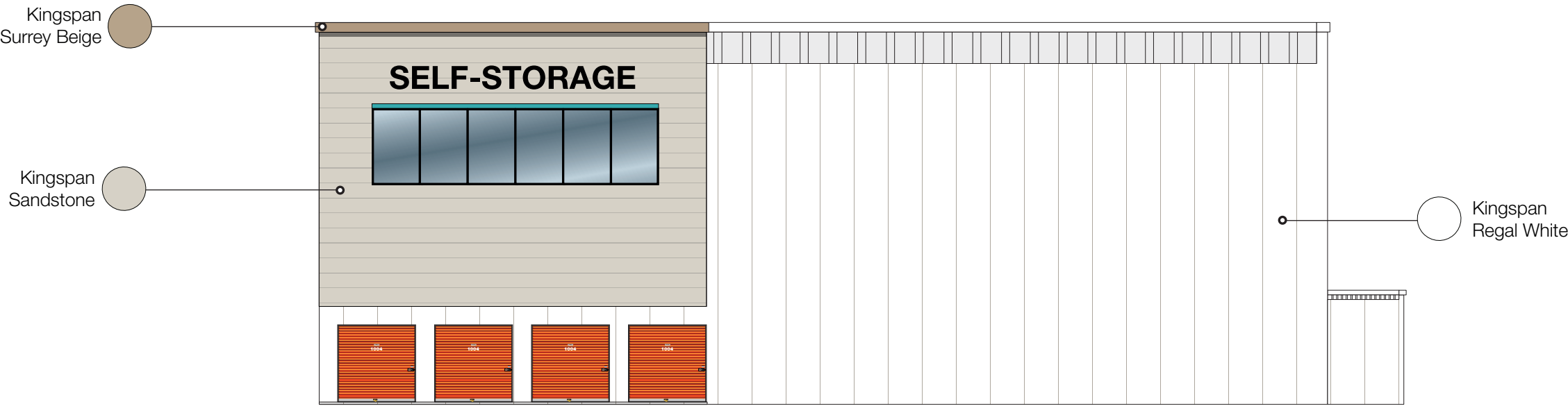
WEST ELEVATION



MOVING & STORAGE AT WEST SENECA
2970 Transit Rd., West Seneca, NY 14224



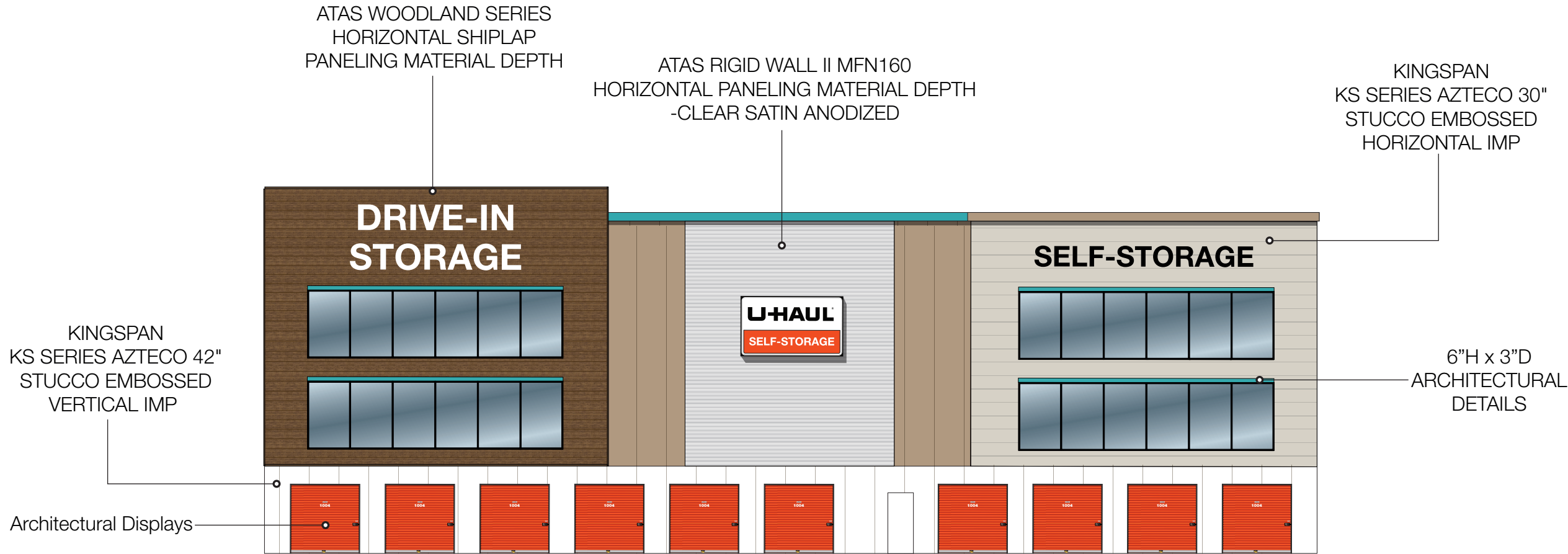
SOUTH ELEVATION



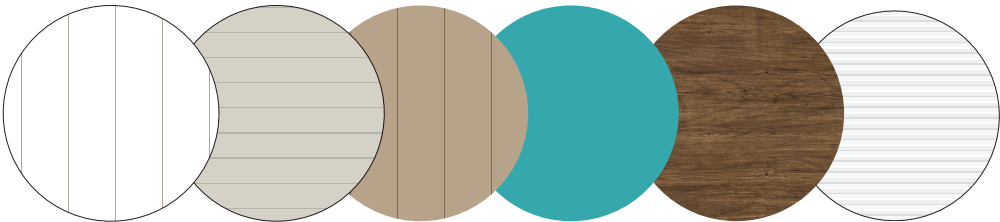
NORTH ELEVATION



MOVING & STORAGE AT WEST SENECA
2970 Transit Rd., West Seneca, NY 14224



EAST ELEVATION





MOVING & STORAGE AT WEST SENECA
2970 Transit Rd., West Seneca, NY 14224

PLASTIC FORMED
CHANNEL LETTERS
18'W X 3'H
54 SQFT

DRIVE-IN
STORAGE

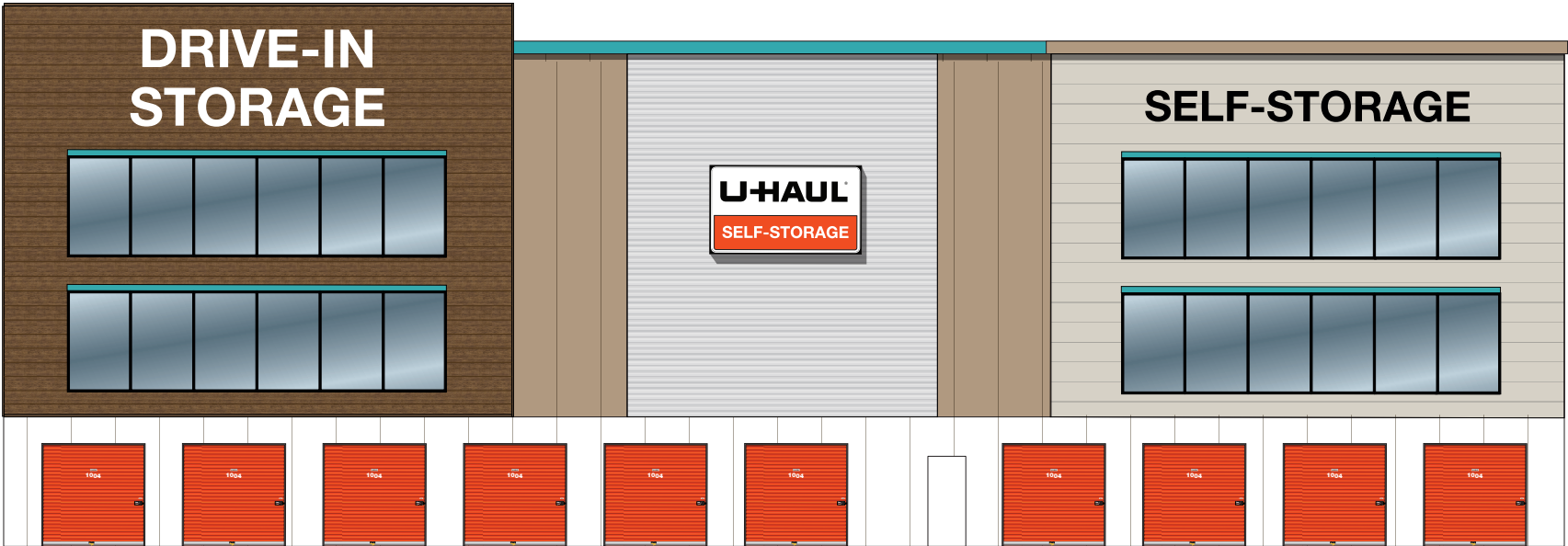
PLASTIC FORMED
CHANNEL LETTERS
20'W X 3'H
60 SQFT

LIT CABINET SIGN
12'W X 7'H
84 SQFT



PLASTIC FORMED
CHANNEL LETTERS
25.5'W X 2.5'H
63.75 SQFT

SELF-STORAGE



EAST ELEVATION





PLASTIC FORMED
CHANNEL LETTERS
18'W X 3'H
54 SQFT

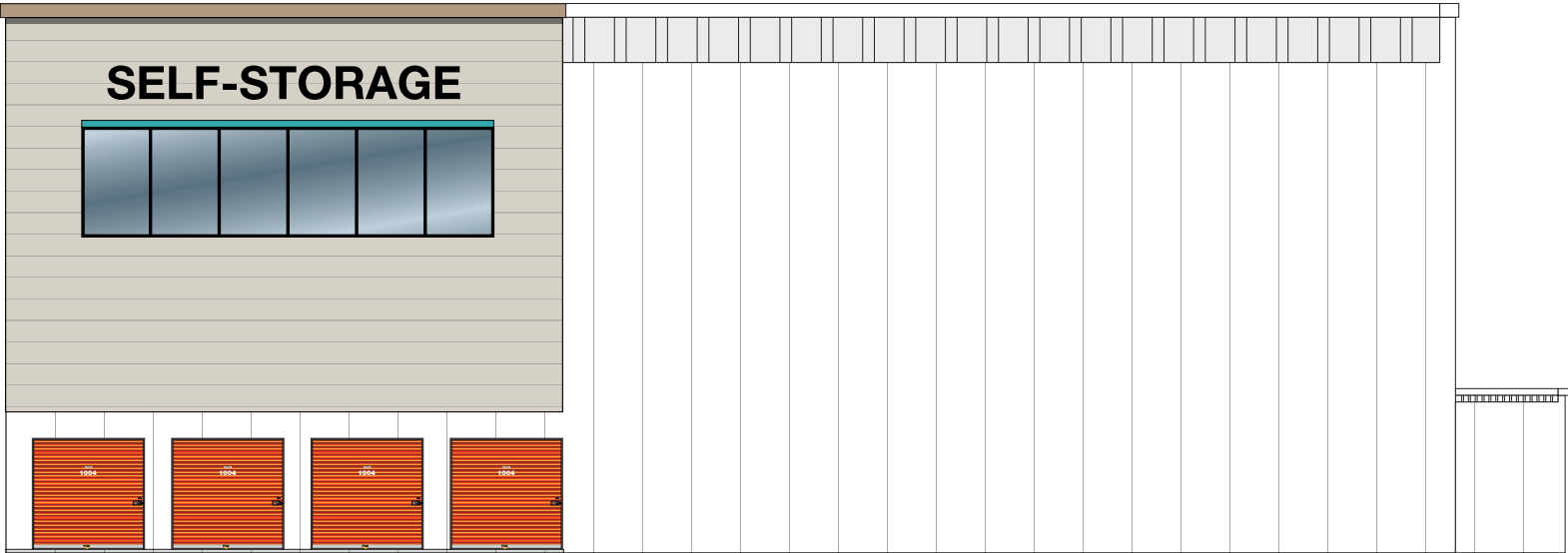
DRIVE-IN
STORAGE

PLASTIC FORMED
CHANNEL LETTERS
20'W X 3'H
60 SQFT

SOUTH ELEVATION

PLASTIC FORMED
CHANNEL LETTERS
25.5'W X 2.5'H
63.75 SQFT

SELF-STORAGE



NORTH ELEVATION

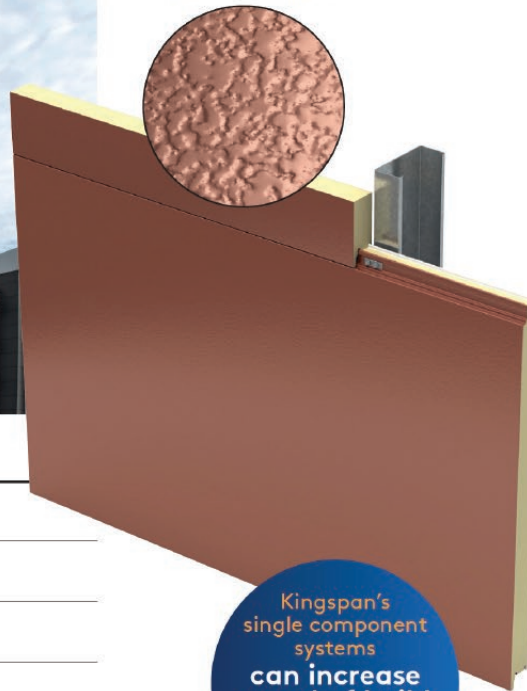


KS Azteco™ Data Sheet

Insulated Wall Panel System



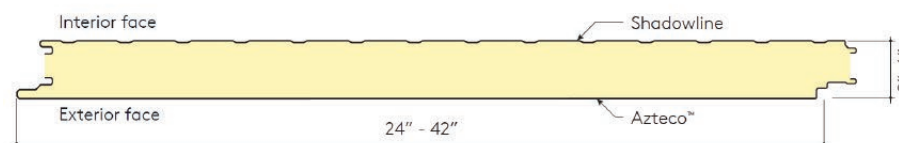
Azteco™ embossing



Kingspan's
single component
systems
can increase
speed of build
by up to
50%

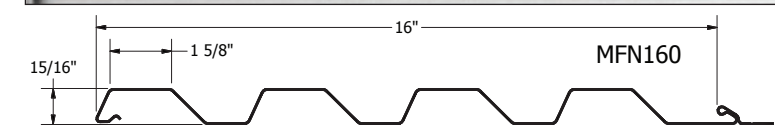
Product Specification

Profile:	Exterior: Flat Interior: Shadowline
Embossing:	Exterior: Azteco™ Interior: Stucco or non-embossed
Gauge:	Exterior: 26, 24, 22 ga Interior: 26, 24, 22 ga
Width:	24", 30", 36", 42"
Thickness:	2", 2.5", 3", 4", 5", 6"
Length:	8' - 53'
Reveal option:	Vertical: 1/8" Horizontal: 1/8" or 3/8"
Orientation:	Vertical or horizontal
Post fabrication (optional):	Trimless ends (Manufacturing limitations apply. Please contact us for detailed information)
R-value:	≈ 7.2 per inch per ASTM C518 @ 75°F mean temperature ≈ 8.25 per inch per ASTM C518 @ 35°F mean temperature



Rigid Wall II

16"w panel - MFN160



ATAS WOODLAND SERIES
LAP SIDING EMBOSSED
HORIZONTAL WALNUT



MOVING & STORAGE AT WEST SENECA
2970 Transit Rd., West Seneca, NY 14224



MOVING & STORAGE AT WEST SENECA
2970 Transit Rd., West Seneca, NY 14224

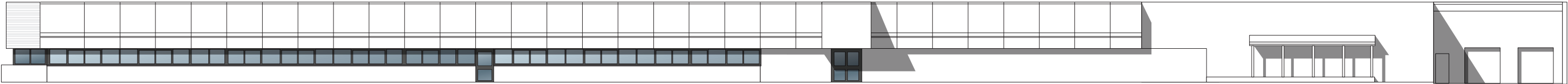




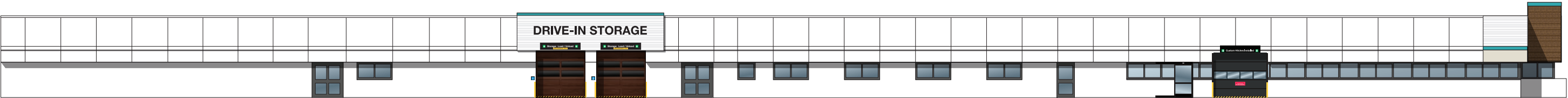
MOVING & STORAGE AT WEST SENECA
2970 Transit Rd., West Seneca, NY 14224



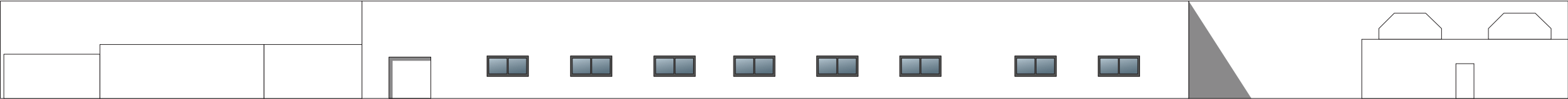
EAST ELEVATION



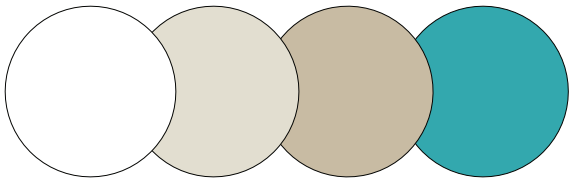
NORTH ELEVATION



SOUTH ELEVATION

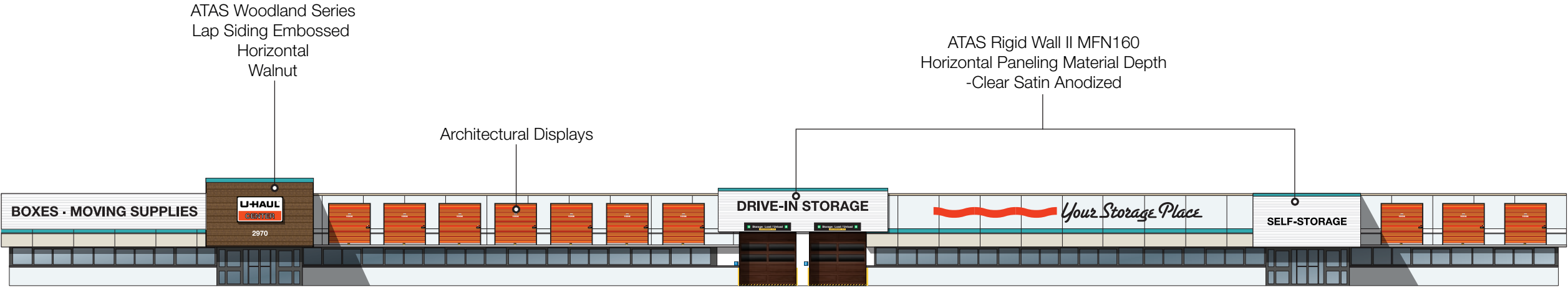


WEST ELEVATION

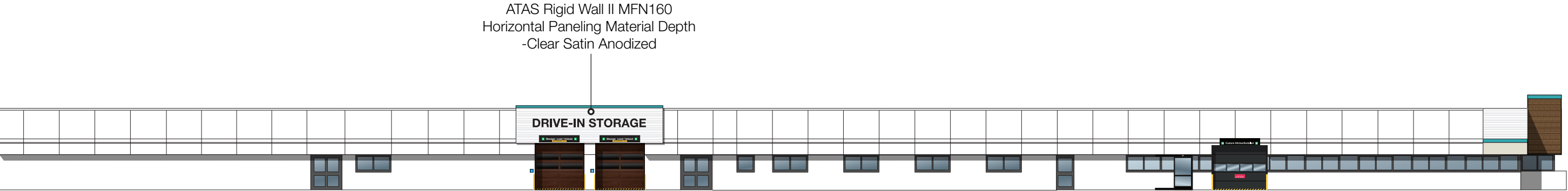




MOVING & STORAGE AT WEST SENECA
2970 Transit Rd., West Seneca, NY 14224



EAST ELEVATION



SOUTH ELEVATION





MOVING & STORAGE AT WEST SENECA
2970 Transit Rd., West Seneca, NY 14224

PLASTIC FORMED
CHANNEL LETTERS
36"W X 2"H
72 SQFT

BOXES · MOVING SUPPLIES

LIT CABINET SIGN
9'W X 5'H
45 SQFT



PLASTIC FORMED
CHANNEL LETTERS
25.5"W X 2'H
51 SQFT

DRIVE-IN STORAGE

11 GAUGE STEEL BLACK
POWDER COAT SIGN
27.5'W X 4'H
110 SQFT

Your Storage Place

SELF-STORAGE

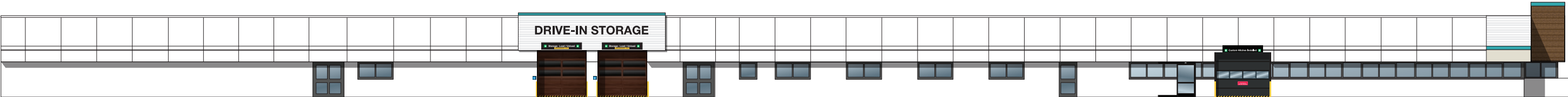
PLASTIC FORMED
CHANNEL LETTERS
15.5'W X 1.5'H
23.25 SQFT



EAST ELEVATION

DRIVE-IN STORAGE

PLASTIC FORMED
CHANNEL LETTERS
25.5'W X 2'H
51 SQFT



SOUTH ELEVATION





ATAS Woodland Series
LAP SIDING EMBOSSED
HORIZONTAL
WALNUT

ATAS Rigid Wall II 16”w panel - MFN160

Rigid Wall II profiles are available in widths of 8”, 12”, or 16” . The panels are 15/16” deep and provide dramatic shadow lines with their 1 5/8” wide ribs. The panels utilize the Wind-Lok™ concealed fastening system and offer uninterrupted vertical or horizontal sight lines.

